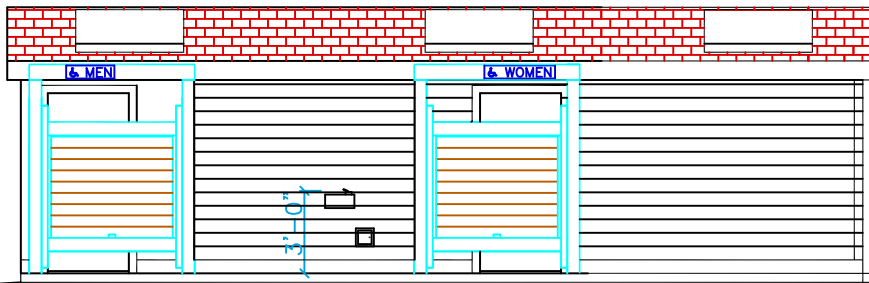
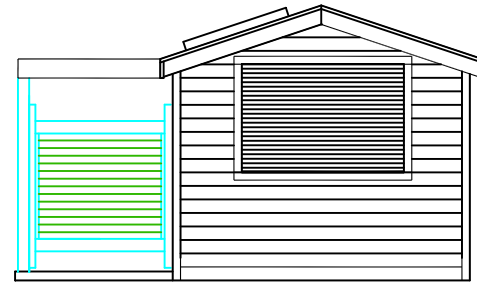


4'X6' ALUMINUM ROLL UP WINDOW WITH 2' x 6' POLY COUNTER

6' FIRST ROW POLY COUNTER WITH 4' LONG SECOND ROW SHELF  
 EXTENDED COUNTER WITH TWO ROWS ADDITIONAL SHELVES

### FLOOR PLAN

NOTE:  
 LANDINGS, WALKWAYS, AND OR RAMPS ARE TO BE FIELD INSTALLED BY OTHERS AS REQUIRED TO MEET LOCAL HANDICAP REQUIREMENTS.



ENTRANCE SLAB (BY OTHERS)

### FRONT ELEVATION

NOTE:  
 FLOOR PLAN SHOWN WITH OPTIONAL DRINKING FOUNTAIN AND RECESSED HOSE BIBB.

◇ SYMBOL: SUPPLIED BY MANUFACTURER AND INSTALLED BY OTHERS.  
 ◆ SYMBOL: SUPPLIED AND INSTALLED BY OTHERS.  
 NOTE: AMMENTITIES SUPPLIED MAY BE RELOCATED TO ACCOMIDATE TRAFFIC OR USE PATTERN WITHOUT DEVIATING FROM ADA RULES BUILDING CODES AND MODULAR SHIPPING ABILITY.

R32-1232-CON RESTROOM/CONCESSION BUILDING

