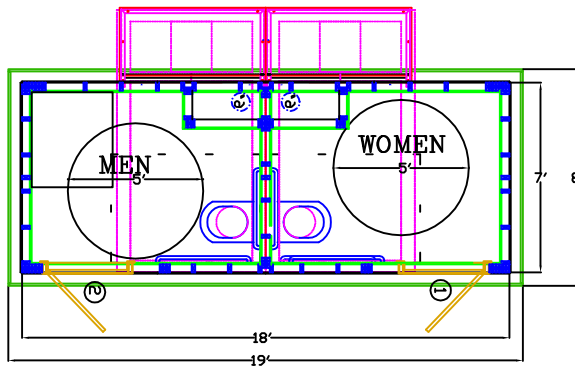
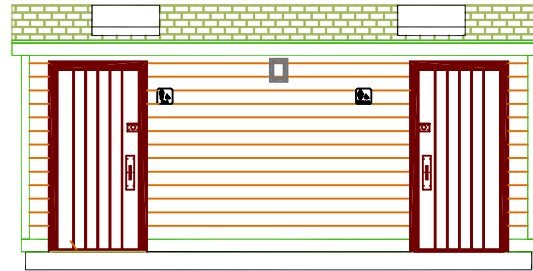


MODEL: R20-819-CLVS2-M54
TYPE: SINGLEWIDE BUILDING
DESCRIPTION: 2 TOILET, COMPOSTING RESTROOM BUILDING

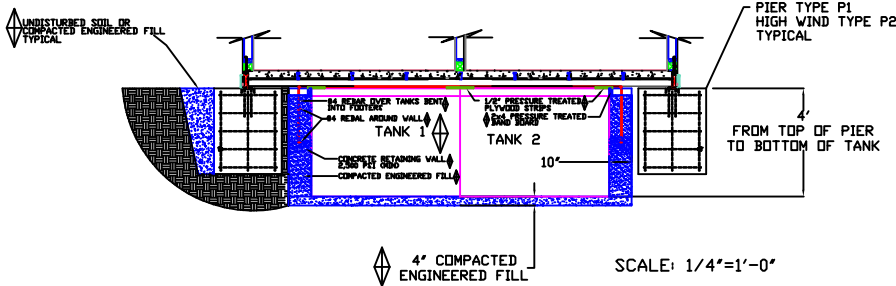


FLOOR PLAN



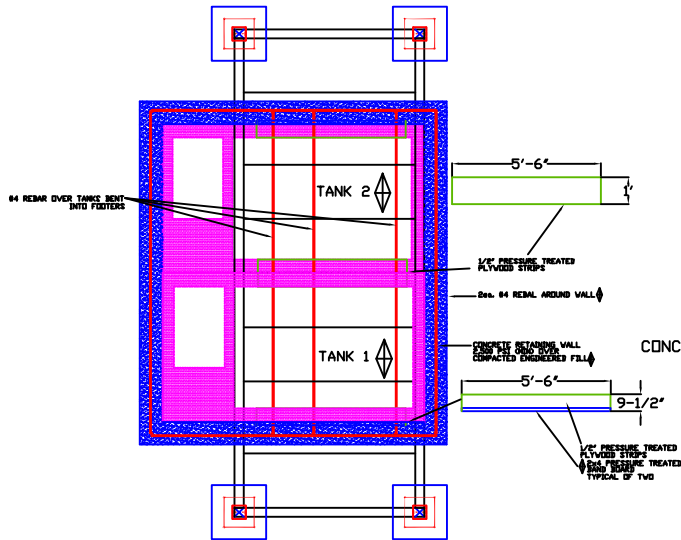
FRONT ELEVATION

QUANTITY	ITEM NUMBER	BUILDING MATERIAL
1	IBEAMFLOOR	1 BEAM STEEL REINFORCED COMPOSIT ACTION CONCRETE FLOOR W/NORA RUBBER
1	PT2	#2 PRESSURE TREATED PINE WALL FRAMING
1	BCXFRPWF	1/2" BCX PLYWOOD (WOOD FRAMING)
1	CLASSC	CLASS "C" (FRP) CONTINUOUS INTERIOR
1	R11	KRAFT BACKED INSULATION R11
1	ALUMTRIM	ALUMINUM INTERIOR BASE AND CORNER MOLDING
1	2X6TGOA	STANDARD 2x6 #2 SYP T&G ROOF DECK OPEN AIR
1	CH40	CERTAINTEE HATTERAS 235lb. 40 YEAR 4-TAB 8" EXPOSURE SHINGLE
1	RF15	15# ROOFING FELT
1	2XOV	2" x 6" #2 SYP EXPOSED RAFTER FRAMING WITH OPEN VENTILATION (SINGLEWIDE)
1	EXT1-2CDZBP	1/2" CDX EXTERIOR PLYWOOD SHEATHING, BUILDING PAPER, ALUMINUM BASE FLASHING
1	FC75B	FIBER CEMENT WOOD TEXTURED 6" REVEAL LAP WITH 5/4" ENGINEERED WOOD TRIM
2	CFW2X3	CUSTOM FRAMED WINDOW/SKYLIGHT 2' x 3'
2	RRD3068	RUSTIC REDWOOD WOOD DOOR WITH HARDWARE
2	RSYPCD25	2' x 5' RUSTIC #2 SYP INTERIOR CLOSET DOOR WITH HARDWARE
PLUMBING		
2	CLIVUS-M54	CLIVUS M54 COMPOSTER WITH STARTER MATERIAL & TOOL
2	AF109	CLIVUS AF109 RISER WITH SEAT
2	SFATAM54	STEEL FRAME AND ALUMINUM TOP ACCESS SYSTEM FOR CLIVUS M-54
2	6PVC	6" PVC PIPE VENT SYSTEM
ELECTRICAL		
2	CSB1151	HUBBELL/BRYANT/LEVITON SINGLE POLE 20amp A/C SWITCH SS-STEEL COVER
1	UNI-KIT-60	UNI 12 VOLT SOLAR LIGHT PACKAGE WITH BATTERY, PANEL AND 4 FLORESENT LIGHTS
1	PIR-2000/12	12 VOLT DC MOTION SENSOR
1	162	THIN-LITE 12VDC OUTDOORVFLUORESCENT LIGHT 16 WATT 1.5A CURRENT 12.5x3.75x2.75
REST ROOM SPECIALTIES		
2	B-6806x36	GRAB BAR- 36" SS STEEL 1-1/2" DIAMETER CONCEALED MOUNTING
2	B-6806x42	GRAB BAR- 42" SS STEEL 1-1/2" DIAMETER CONCEALED MOUNTING
2	B-27460	DOUBLE TUMBLER ROLL TOILET TISSUE DISPENSER W/LOCK.
MISCELLANEOUS ITEMS		
43	DRSHRINK	SHRINK WRAP FOR SHIPPING (LIN.FT.)
2	MWSU	6x9 SIGN
3	SSP	STAIN/SEALER/PAINT
1	ESTP	ENGINEERS SEAL
1	TPI	THIRD PARTY INSPECTION



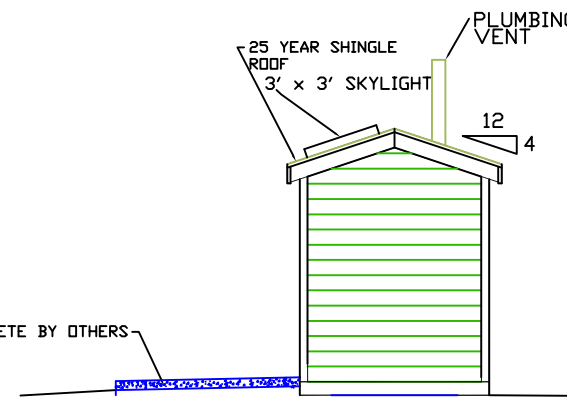
TANK ELEVATION DETAIL

NOTE: PIERS TO BE POURED DEAD LEVEL WITH EACH OTHER AND WITH TANK TOP EDGE.

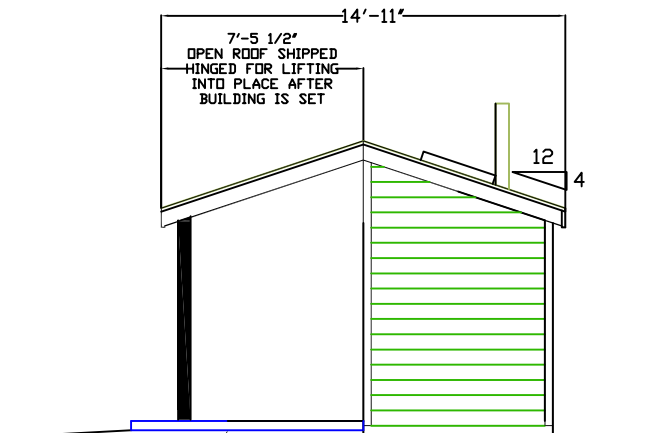


TANK FOUNDATION PLAN

NOTE: LANDINGS, WALKWAYS, AND OR RAMPS ARE TO BE FIELD INSTALLED BY OTHERS AS REQUIRED TO MEET LOCAL HANDICAP REQUIREMENTS.



RIGHT ELEV. STANDARD ROOF



RIGHT ELEV. EXTENDED ROOF KIT

◇ SYMBOL: SUPPLIED BY MANUFACTURER AND INSTALLED BY OTHERS.
 ◆ SYMBOL: SUPPLIED AND INSTALLED BY OTHERS.
 NOTE: AMMENTITIES SUPPLIED MAY BE RELOCATED TO ACCOMMODATE TRAFFIC OR USE PATTERN WITHOUT DEVIATING FROM ADA RULES BUILDING CODES AND MODULAR SHIPPING ABILITY.

MODEL: R20-819-CLVS2-M54
2 TOILET, HOLDING TANK
TYPE 2 BUILDING

