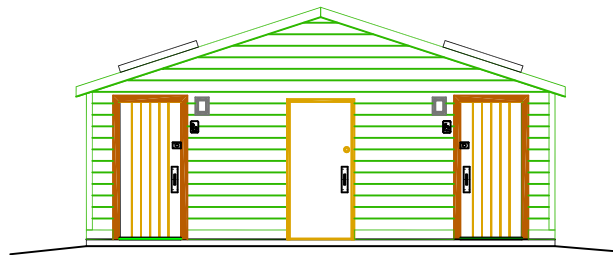
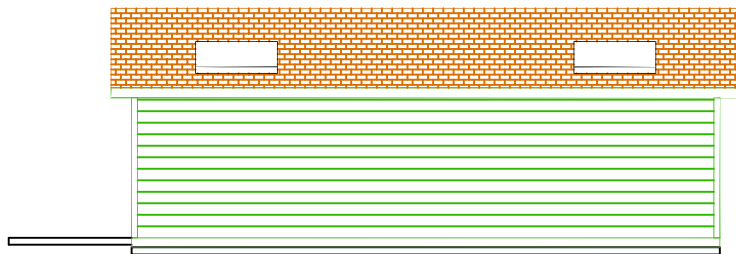


FLOOR PLAN



FRONT ELEVATION



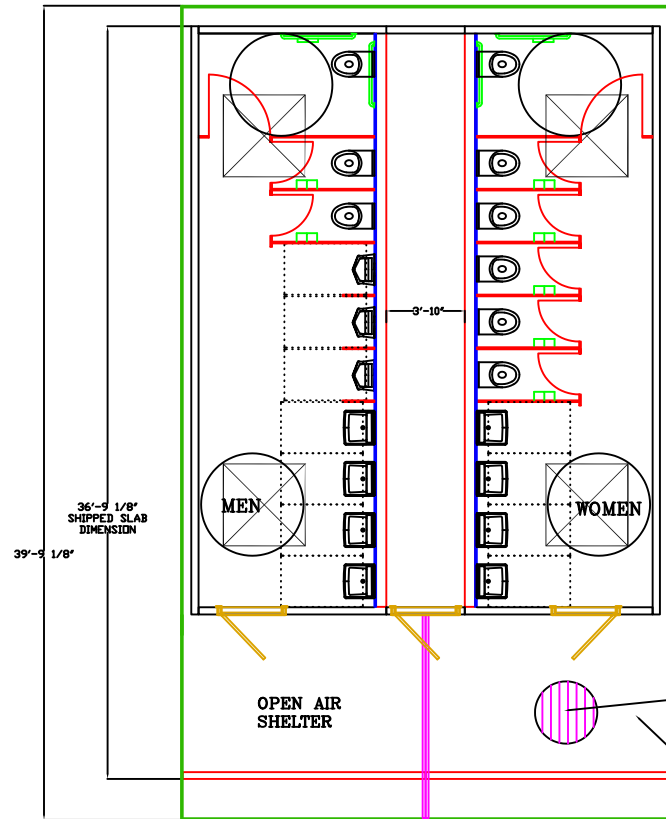
LEFT ELEVATION

NOTE:  
LANDINGS, WALKWAYS AND RAMPS ARE TO BE SUPPLIED AND  
INSTALLED BY OTHERS AS REQUIRED TO MEET LOCAL HANDICAP  
ACCESSIBILITY REQUIREMENTS.



MODEL: DW86-2423, 6 TOILET  
2 URINAL, 6 LAVATORY  
RESTROOM BUILDING

⊕ SYMBOL: SUPPLIED BY MANUFACTURER AND  
INSTALLED BY OTHERS.  
⊖ SYMBOL: SUPPLIED AND INSTALLED BY OTHERS.  
NOTE: AMENITIES SUPPLIED MAY BE RELOCATED  
TO ACCOMMODATE TRAFFIC OR USE PATTERN  
WITHOUT DEVIATING FROM ADA RULES  
BUILDING CODES AND MODULAR SHIPPING ABILITY.

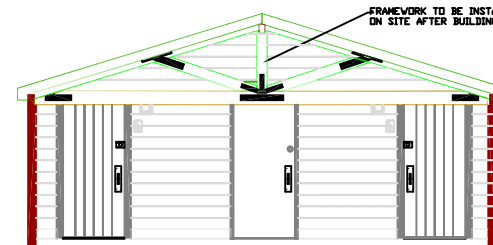


FLOOR PLAN

OPEN AIR  
SHELTER

2x6 #2 EVIS SOUTHERN  
YELLOW PINE BECKING  
SEALED TO MATCH RIDGE  
  
ENTRANCE ROOF, FRAMEWORK,  
ROOFING, AND POSTS  
IS SHIPPED COMPLETE  
AND ATTACHED TO A  
12' SINGLE WIDE BUILDING.

FLOOR PLAN



FRONT ELEVATION

WHEN USING THIS EXTENSION KIT, THE ATTACHING  
SECTION CD MUST INCLUDE 2x6 #2 SYP BECKING OPTION

MODEL: EXT-DW-1024LA  
DOUBLE WIDE OPEN AIR  
ROOF EXTENSION KIT

